

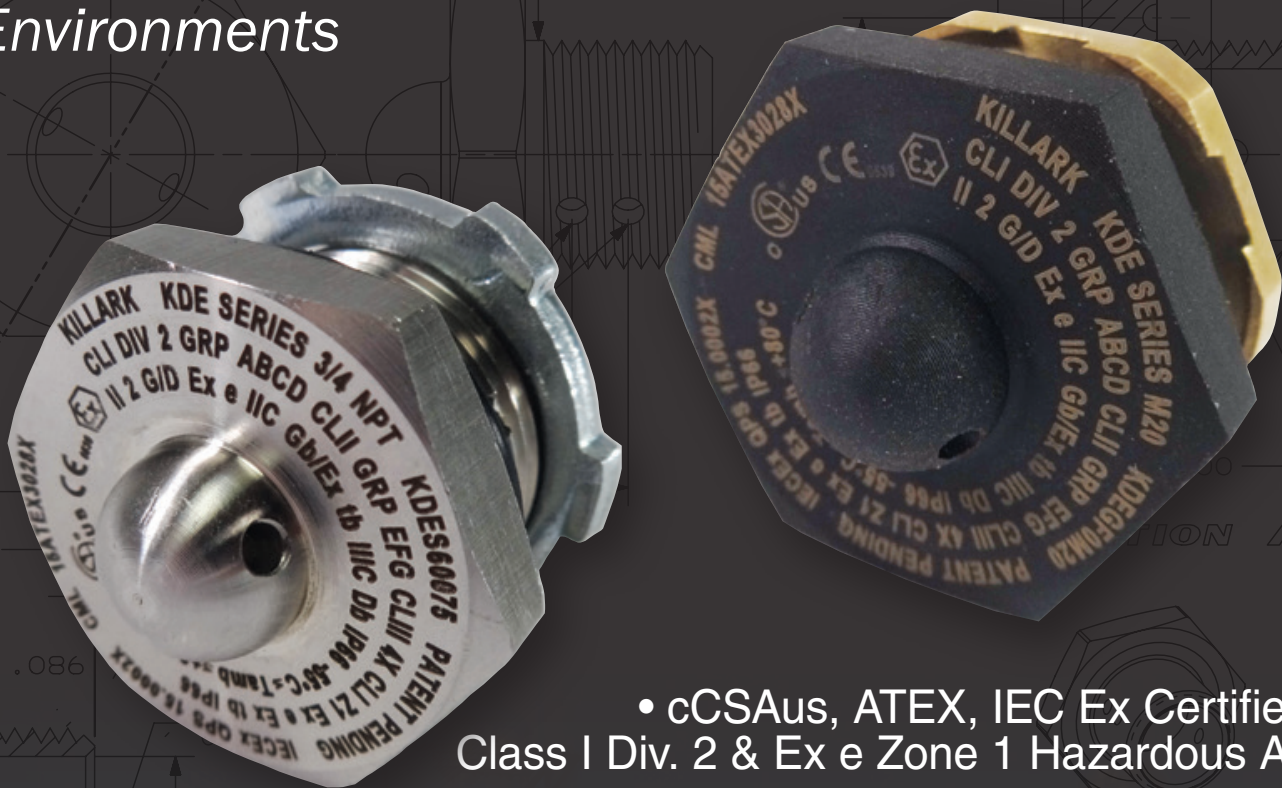


Harsh & Hazardous

# KILLARK®

## KDE Series Drain Breather

*for Harsh and Hazardous  
Environments*



- cCSAus, ATEX, IEC Ex Certified for Class I Div. 2 & Ex e Zone 1 Hazardous Areas
- Small Compact Size With Low Profile-Supplied With 316 Stainless Steel Locknut
- Available in Fiberglass, 316 Stainless Steel, Aluminum & Brass
  - Wide Chose of Thread Sizes, 1/2 NPT, 3/4 NPT, M20 & M25
  - Type 4, 4X and IP66 Certified for Hose Down and Harsh Areas
  - For Use in Ambient Temperatures Ranging From -55°C to +80°C



## KDE SERIES DRAIN BREATHER



Class I, Div. 2, Groups A, B, C, D  
Class I, Zone 1 & 2, Ex e / AEx e IIC,  
A/Ex tb  
Class II, Div. 1<sup>①</sup> & 2, Groups E, F, G  
Class III, Ambient Temperature Range  
-55°C to +80°C  
Enclosure Type 3, 4 & 4X<sup>②</sup> IP66

Ex II 2 G D CE 0539  
Ex e IIC Gb  
Ex tb IIIC Db IP66  
Ta = -55°C to +80°C

PATENT PENDING

SP 2714851  
CML 15ATEX3028X  
IECEx QPS 15.0002X

### FEATURES-SPECIFICATIONS

#### Applications

When installed in the bottom of a thin wall enclosure the KDE allows water from condensation to drain continuously out of the enclosure. The drain breathers are installed through clearance holes and held secured with a internal locknut. The silicone external o ring makes a hose down tight seal.

#### Features

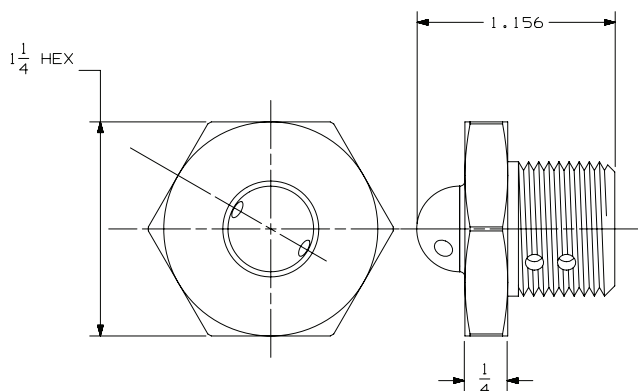
- Silicone o-ring supplied as standard and suitable for use in a -55°C to +80°C temperature range.
- Variety of thread sizes 1/2 & 3/4 NPT, 1/2 & 3/4 NPSM, M20 & M25.
- Available in 300 series stainless steel, 316 stainless steel, aluminum and 30% glass filled nylon.
- Internal 316 stainless steel locknut supplied as standard. When tighten to the proper torque the joint makes a hose down tight seal for type 4, 4X & IP66 application.

#### Materials

- 303 or 304 stainless steel, 316 stainless steel, brass, aluminum or 30% glass filled nylon.
- Internal locknut 316 stainless steel.
- High temp silicone o-ring

#### Catalog Number Logic

KDE	1	2	3
<b>Material Type</b>			
AL = Alum			
BR = Brass			
S3 = 303 Stainless Steel			
S4 = 304 Stainless Steel			
S6 = 316 Stainless Steel			
GF = 30% Glass Filled Nylon			
<b>Plating</b>			
0 = Unplated			
1 = Nickel			
2 = Zinc			
6 = Chromatise			
8 = Electroless Nickel			
<b>Thread Size / type</b>			
M20 = M20 Metric			
M25 = M25 Metric			
050 = 1/2 in. NPT			
075 = 3/4 in. NPT			
050NPSM = 1/2 in. NPSM			
0705NPSM = 3/4 in. NPSM			



<sup>①</sup> Class II Div. 1 Canada only, Div. 2 in the U.S.

<sup>②</sup> Type 4X in 316 & 304SS, aluminum & nylon materials only.