

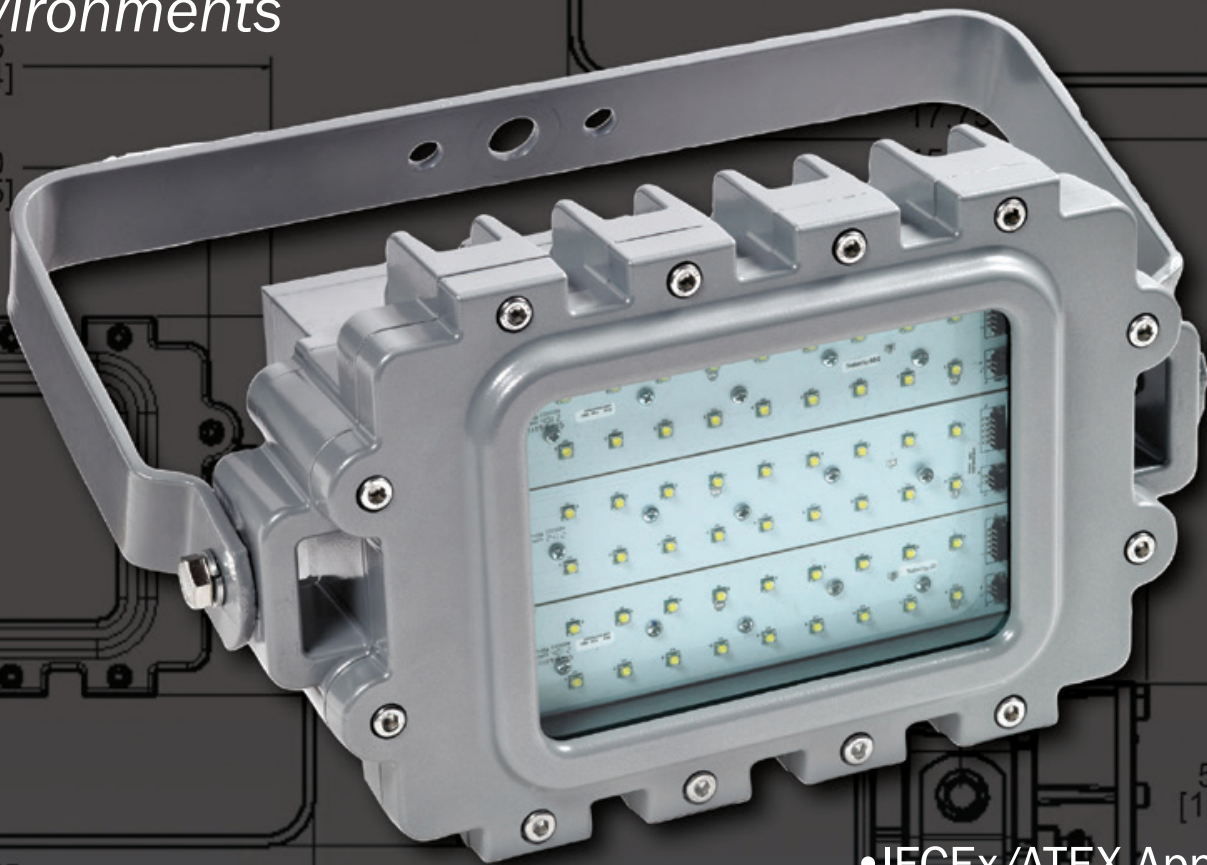


Harsh & Hazardous

KILLARK®

KF1L Series LED TECHNOLOGY

*for Harsh and Hazardous
Environments*



17.75
[450.9]

Front



HSI=GREEN
HUBBELL SUSTAINABILITY INITIATIVE

- IECEX/ATEX Approved
- From 90W to 125W Output
- Up to 93 Lumens per Watt
- Ambient Sustainability -50°C to 55°C
- Long Life 150,000 Maintenance Free Hours
- Crisp White 5000 Kelvin Light (Noon Sunlight)
- Thermal Shock and Impact Resistant Glass Lens



C1D1 FLOOD - INTRODUCTION & LOGIC



Class I, Div. 1&2, Groups B,C,D
Class I, Zone 1&2, Groups IIB+H2, IIA
Class II, Div. 1&2, Groups EFG, Class III
Enclosure Type 4X, IP66 (-50°C to +55°C)

File LR11713

IEC Ex Rated model (w/IEX or IEX4B suffix) Zone 1, Zone 21
Ex de IIB+H2 T6..T5, Gb, IP66
Tamb -20°C ≤ Ta ≤ +55°C; Option LT for -50°C ≤ Ta ≤ +55°C①
Ex de IIB T6..T5, Gb, -50°C ≤ Ta ≤ +55°C①
Ex tb IIIC T90°C Db, -50°C ≤ Ta ≤ +55°C①
Certificate IECEX CSA 14.0010
ATEX Certificate SIRA14ATEX1159X

PETROBRIGHT® LED

FEATURES-SPECIFICATIONS

Applications

LED KF1L Series Explosion-proof Floods are designed for installations where moisture, dirt, dust, corrosion and vibration may be present, or NEMA 3 and 4X areas where wind, water, snow or high ambients can be expected. They can be used in locations made hazardous by the presence of flammable vapors or gases or combustible dusts as defined by the NEC.

Typical applications include manufacturing plants, and certain chemical and petrochemical processing facilities, sewage treatment plants, off-shore and dockside installations, garages and storage facilities

Compliances

- UL-8750 for LED lighting
- ANSI/UL 1598A
- UL-844 Standard for lighting fixtures for hazardous locations, Class I, Division 1; Class II, Division 1; Class III
- CSA C22.2 no. 137-M1981 electric luminaires for use in hazardous locations
- IEX or IEX4B suffix for Zone 1 and Zone 21 to IEC 60079-0, 60079-1, 60079-31, 60079-7 Standards
- Enclosed and gasketed
- NEMA 3, 4X, IP66

Materials

- Body, end caps and lens frame corrosion resistant copper-free aluminum alloy with baked powder epoxy/polyester finish, electrostatically applied for complete, uniform corrosion protection
- All external hardware - stainless steel
- Thermal shock and impact resistant extra heavy-duty glass lens
- High temperature silicone gasketing
- Trunnion heavy gauge 316 SS

LED Flood Features and Standards

- **Factory Sealed Construction**
- One 3/4" NPT & one M20 entry standard (see logic for other choices)
- **Supplemental surge protection (AC models 120-277VAC only) and looping terminals are standard**
- Crisp White Light for Excellent Color Rendering - Chromaticity 5000 K (CCT); approx. 70 CRI
- Energy Savings - High lumens per watt
- Long Life - 80,000 maintenance free hours to 70% initial lumens
- Instant On - Including after power interruption
- World Voltage 120 - 277VAC 50/60Hz
- Solder-LESS LED Board Connections - Vibration Resistant
- LM80-08* Measurement of lumen maintenance for LED light sources
- LM79-08* Certified "Absolute" Photometry, including Chromaticity Color for Solid State Lighting
- L70 Values - Industry Nomenclature for Hours of use to 70% of initial Lumens - TM-21* & calculated

Patent Pending Fixture Design



KF1L with KFS-6 Slipfitter mount on 2" pipe



Dark Sky Visor
KF1L-DARK

* LM-xx and TM-xx are Illumination Engineering Society Standards designed to promote uniformity in testing procedures among test labs and manufacturers. For more information go to www.ies.org

Catalog Number Logic

	KF1L	125	30	XX
KF1L - Series Constant				
Fixture Wattage				
090 - 90W				
105 - 105W				
110 - 110W				
125 - 125W				
Voltage				
30 - 120 - 277VAC 50/60Hz				
33 - 347 - 480VAC 60Hz				
34 - 120-250VDC				
Options				
IEX4B - Four bolt termination cover (see Note 1)				
LT - For -50°C to +55°C, IEC Zone 1 (see Note 1)				
F - Single Fuse FF - Double Fuse②				
D20 - Dual M-20 Entries				
D25 - Dual M-25 Entries				
D75 - Dual 3/4" NPT				

② Fusing not for Canadian or Marine Installations

① Construction/Certification
Notes: KF1L units are standard with one 3/4" NPT hub & one M20 hub - both plugged, with an 8-bolt factory sealed termination chamber, suitable for CID1 BCD -50°C to +55°C and IEC Zone 1
Ex de suitable for -20°C to 55°C.

Use option LT for models needing IEC Zone 1, -50°C to +55°C suitability for hydrogen.

Option IEX4B utilizes 4 terminal cover bolts for Ex de and maintains all ratings
EXCEPT CID1 BCD.

See logic for other entry options

LIGHTING

KF1L SERIES



C1D1 FLOOD - ORDERING & TECHNICAL DATA

Ordering Information and Ambient Suitability					NEC				IEC			
Catalog No.①	Watts	Voltage②	Amps 120/277③	Lumens	40°C	55°C	40°C	55°C	40°C	55°C	40°C	55°C
KF1L09030	90	120VAC through 277VAC 50/60Hz	.72/31	7182	T6	T6	EFG	⑤	T6	T5	160/75	175/90
KF1L10530	105		.85/37	8362	T6	T6	EFG	⑤	T6	T5	160/75	175/90
KF1L11030	110		.95/41	10590	T6	T6	EFG	⑤	T6	T5	160/75	175/90
KF1L12530	125		1.10/48	11560	T6	T6	EFG	⑤	T6	T5	160/75	175/90

① Shipping weight Approx. 46lbs; **yellow highlighted** models have extra high lumen LED's.

② See logic for 347-480V availability

③ Amperage measured at 120VAC; 277VAC calculated

④ Use minimum 75° Supply Wire @40°C Ambient; 90°@55°C Ambient

⑤ C1D1 40°/55° & C2D1 40°C use Aiming Figure "A" below.

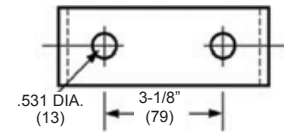
⑥ 55°C C2D1 EFG T3C Aiming Figure "B", 55° C2D1 EF T3A Aiming Figure "A"

⑦ First number is lens temperature under 25mm layer of dust; Second number is lens temp for dust cloud.

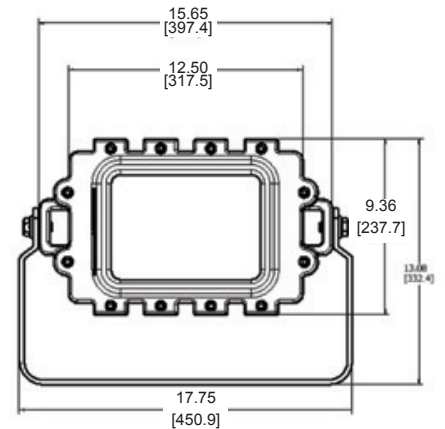
L70	Calculated	TM-21**
90 or 105W Models	150,000+	60,100
110 or 125W Models	150,000+	72,600

** TM-21 based values require very long duration testing. IES TM-21 "official reported" is based on at least 10,000 hours of LED chip manufacturer's LM-80 Testing (minimum 36,000, but continuing) at launch.

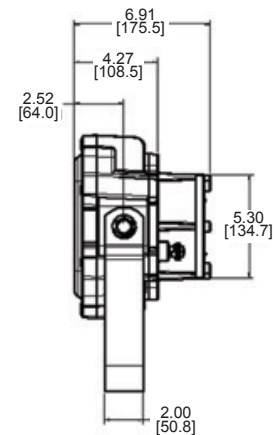
Dimensions



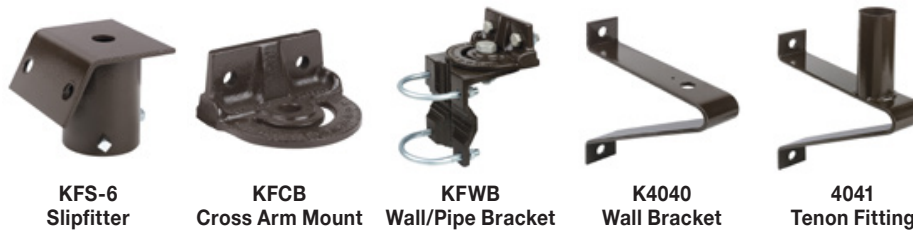
Trunnion Mounting Detail



Front



Side



KFS-6
Slipfitter

KFCB
Cross Arm Mount

KFWB
Wall/Pipe Bracket

K4040
Wall Bracket

4041
Tenon Fitting

KFL Mounts and Accessories①

CATALOG NUMBER	DESCRIPTION
KFS-6	Steel Slipfitter for 2" Pipe (2-3/8" o.d.) Tenon. Slips 3.75" Over Pipe.
KFCB	Heavy Duty Cast-Iron Crossarm Fitting for Horizontal Trunnion
KFWB	Heavy Duty Wall Mount and/or Pipe Clamp Fitting Clamps 2" Pipe (2-3/8" o.d.) Through 2-1/2" Pipe (2-7/8" o.d.)
K4040	Heavy Duty Steel Wall Bracket. (Must be with KFCB Crossarm Fitting).
4041	Heavy Duty Steel Wall Bracket 2" Pipe (2-3/8" o.d.) Tenon Fitting.
KFLG	Wire Guard, 316 Stainless Steel
VMSC10	10' Stainless Steel Safety Cable with loop grip②
KFL-DARK	Dark Sky Visor, White Painted Aluminum③
KFL-DOOR	Replacement Door and Lens Assembly

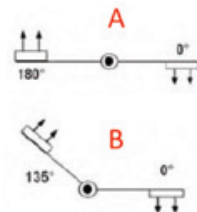
① Fittings available to adapt trunnion mount floodlights to crossarms, poles and walls. Must be ordered separately.

② Drop limit 1'. Attaches to luminaire cable provision and to mounting structure.

③ Designed to eliminate uplight when aimed at 45°.

Typical Weights (lbs.) Including Yoke - KF1L Series 41.00

Aiming Figures See Notes ⑤ & ⑥





CERTILITE[®] DESIGN

LIGHTING DESIGN SOFTWARE

Copyright ©2014 All Rights Reserved

- **Modern “Ribbon” Windows Interface with “Real Time” Calculations**
- **Easily import/export of CAD files (DWG/DXF/PDF)**
- **Enhanced photometric database with luminaire images and wireframes**
- **Ability to draw round or complex rooms and grids**
- **False Colors to indicate “Relative Brightness”**

See “Lighting Software link” at www.hubbell-killark.com to download

HKSB-KF1L 12-14

KILLARK[®]

3940 M.L. King Dr. St. Louis, MO 63113
TEL: (314) 531-0460 FAX: (314) 531-7164
www.hubbell-killark.com

